

REMKE PLAZA REDEVELOPMENT

2501 Dixie Highway Ft. Mitchell, KY



A NORTHERN KENTUCKY LANDMARK RE-IMAGINED

FOR LEASING INFORMATION

Scott Mitchell

Anchor Associates

513-349-1201

smitchell@anchor-associates.com

Anchor
ASSOCIATES

A MEMBER OF
CHAINLINKS
RETAIL ADVISORS

ANCHOR ASSOCIATES

3825 Edwards Road, Suite 630

Cincinnati, OH 45209

513-784-1106

www.anchor-associates.com

REMKE PLAZA REDEVELOPMENT

2501 Dixie Highway Ft. Mitchell, KY



FOR LEASING INFORMATION

Scott Mitchell

Anchor Associates

513-349-1201

smitchell@anchor-associates.com

Anchor
ASSOCIATES

A MEMBER OF
CHAINLINKS
RETAIL ADVISORS

ANCHOR ASSOCIATES

3825 Edwards Road, Suite 630

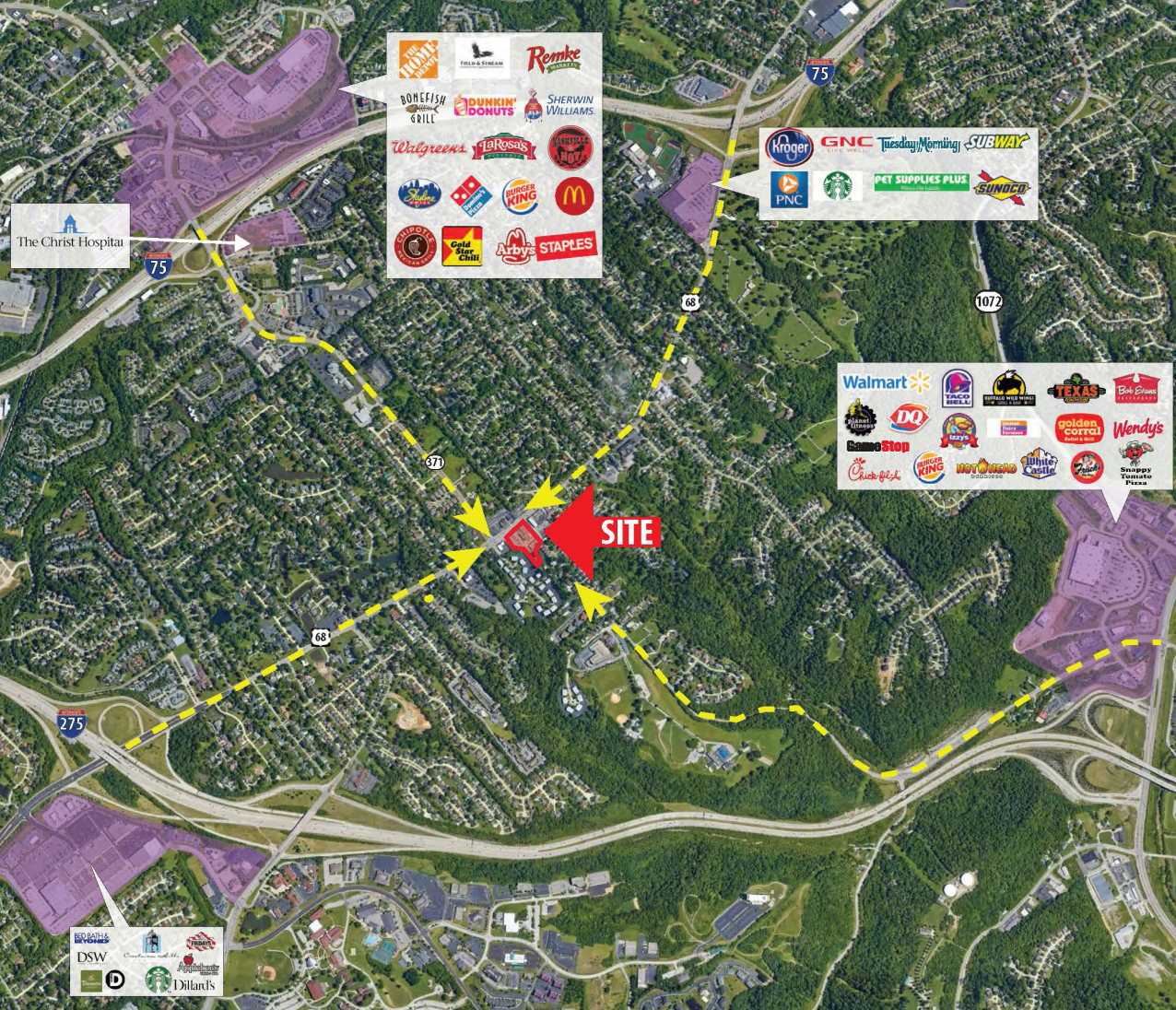
Cincinnati, OH 45209

513-784-1106

www.anchor-associates.com

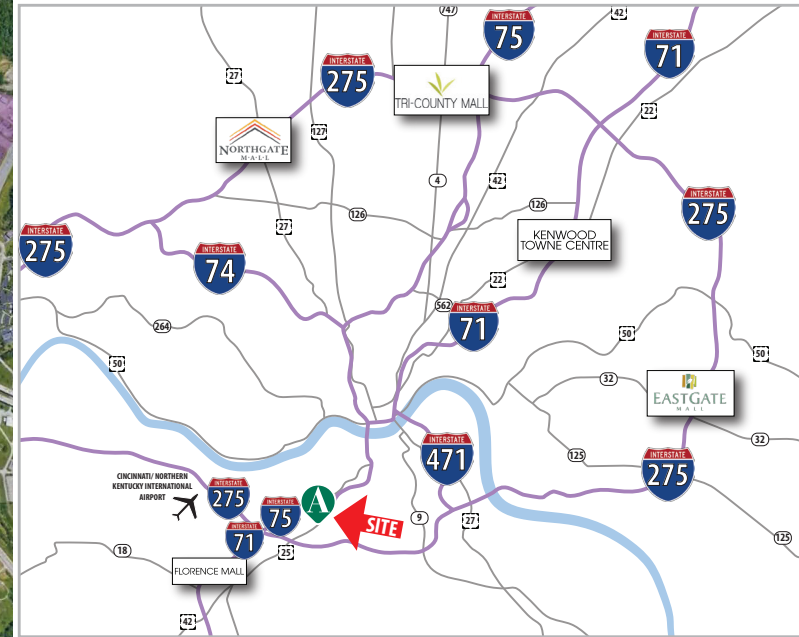
REMKE PLAZA REDEVELOPMENT

2501 Dixie Highway Ft. Mitchell, KY



DEVELOPMENT HIGHLIGHTS

- 1,500 - 7,000 SF Available
- Parking Spaces: 121
- \$78,331 Median HH income in a 1 mile radius
- Central location with multiple points of access to I-71/I-75 and I-275
- Retailers in a 3 mile radius include Walmart, Bed Bath and Beyond, Dillards, Kroger, Home Depot and more

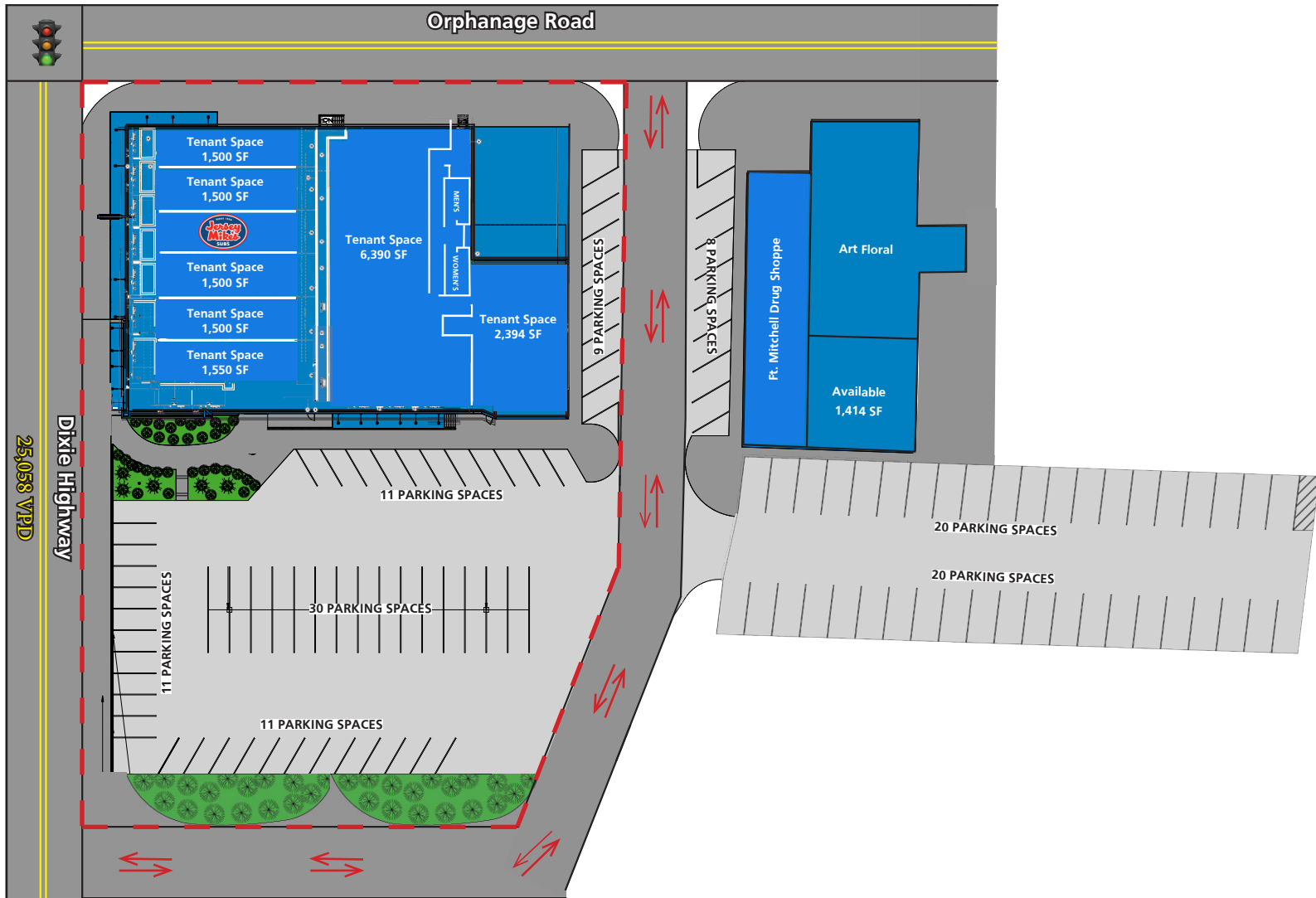


DEMOGRAPHICS (2018)	1Mile	3Mile	5Mile	TRAFFIC COUNTS
Population	9,561	60,490	179,113	Dixie Highway
Households	4,286	25,508	73,621	25,058 VPD (2018)
Median HH Income	\$78,331	\$73,900	\$60,436	Buttermilk Pike
Daytime Employees	4,105	43,558	110,856	14,700 VPD (2018)



REMKE PLAZA REDEVELOPMENT

2501 Dixie Highway Ft. Mitchell, KY



FOR LEASING INFORMATION

Scott Mitchell
Anchor Associates
513-349-1201
smitchell@anchor-associates.com

Anchor
ASSOCIATES

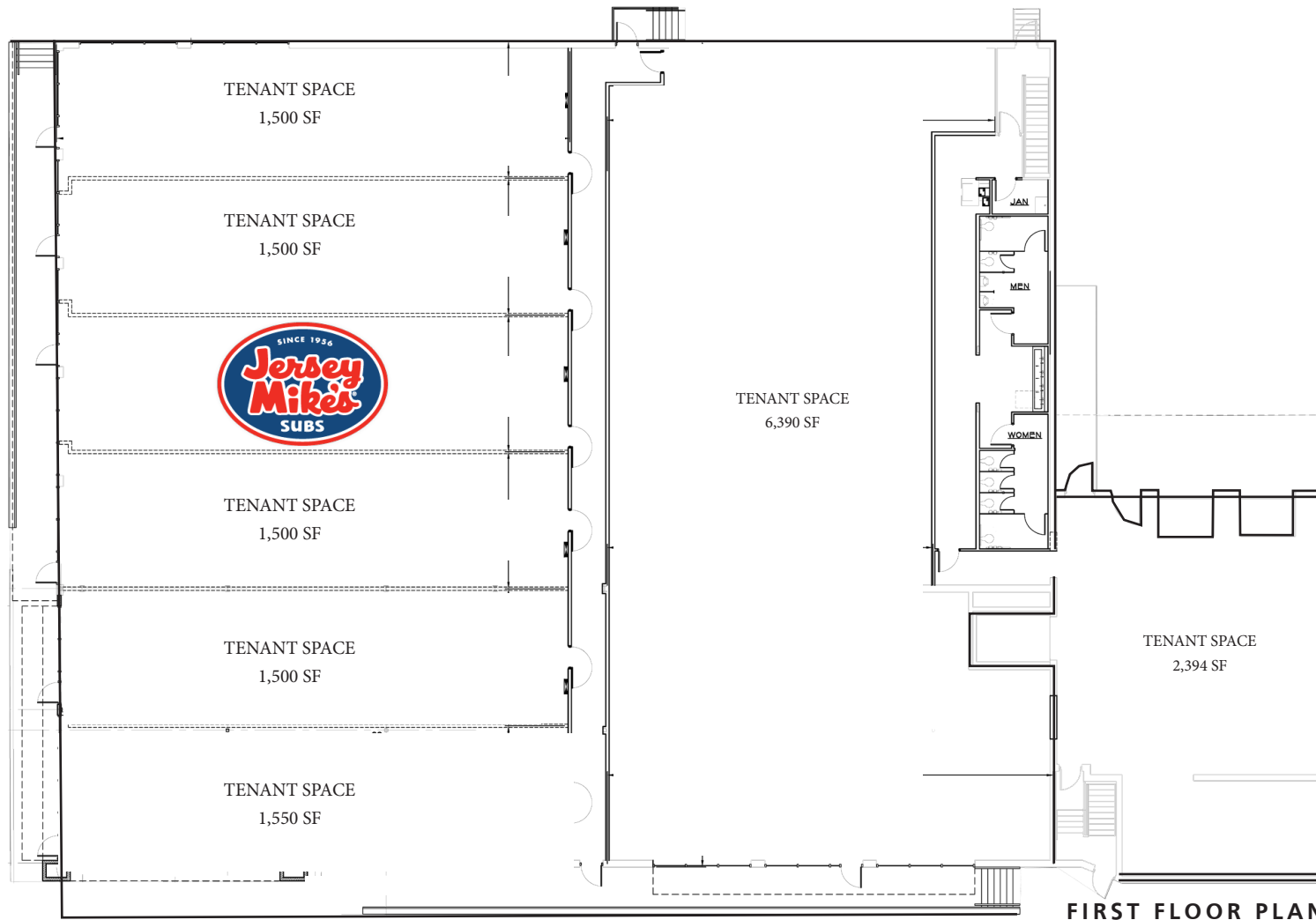
A MEMBER OF
CHAINLINKS
RETAIL ADVISORS

ANCHOR ASSOCIATES

3825 Edwards Road, Suite 630
Cincinnati, OH 45209
513-784-1106
www.anchor-associates.com

REMKE PLAZA REDEVELOPMENT

2501 Dixie Highway Ft. Mitchell, KY



1,500-7,000 SF AVAILABLE

Anchor
ASSOCIATES

A MEMBER OF
CHAINLINKS
RETAIL ADVISORS

ANCHOR ASSOCIATES

3825 Edwards Road, Suite 630

Cincinnati, OH 45209

513-784-1106

www.anchor-associates.com