

STONE CREEK TOWNE CENTER

9825 Colerain Ave / 3645-3659 Stone Creek Blvd / 3720 Stone Creek Blvd
Cincinnati, OH 45251



FOR LEASE
1,200 SF - 6,617 SF

HIGHLIGHTS

- Free standing 6,617 SF former restaurant available for lease
- Located at I-275 & State Route 27 (Colerain Avenue)
- 2 signalized access points
- Anchored by Best Buy, Bed Bath & Beyond, JCPenney and Meijer
- Other retailers include Old Navy, Justice, Lane Bryant and La-Z-Boy Furniture
- Restaurants include Olive Garden, Quaker Steak & Lube, Five Guys, LaRosa's, Buffalo Wild Wings and TGI Friday's

TRAFFIC COUNTS

- 78,542 VPD on I-275
- 39,311 VPD on Colerain Avenue

DEMOGRAPHICS

2020 Estimates	1 miles	3 miles	5 miles
Population	11,085	58,521	152,695
Households	4,595	23,832	63,333
Average HH Income	\$75,103	\$80,142	\$79,212
Daytime Employees	6,398	17,478	43,464

CONTACT: 513-784-1106
Marianne Holewski mholewski@anchor-associates.com
Amy Holter aholter@anchor-associates.com



ANCHOR ASSOCIATES
3825 Edwards Road
Suite 630
Cincinnati, OH 45209
513-784-1106
www.anchor-associates.com

A MEMBER OF
CHAINLINKS
RETAIL ADVISORS

STONE CREEK TOWNE CENTER

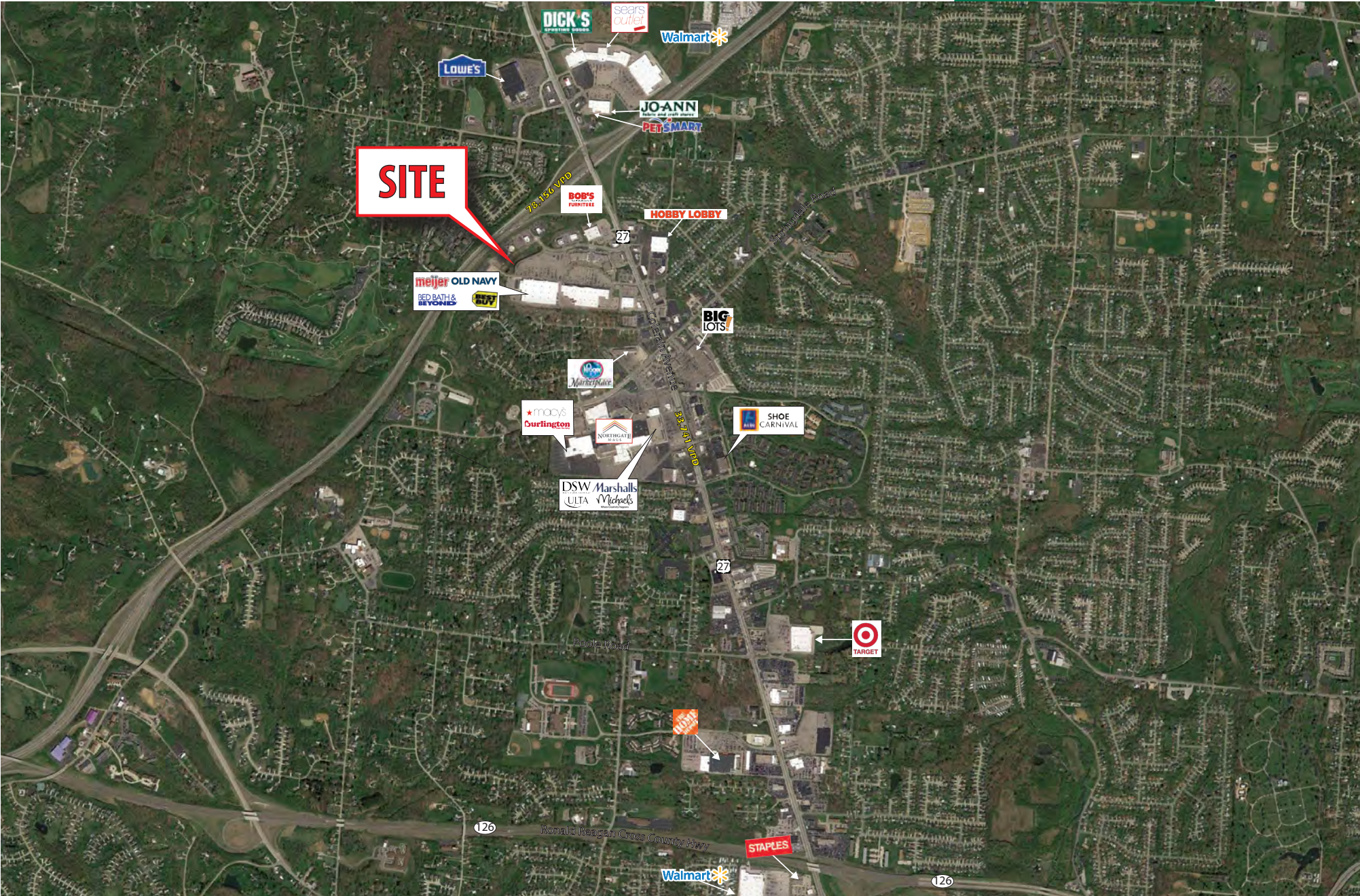
9825 Colerain Ave / 3645-3659 Stone Creek Blvd / 3720 Stone Creek Blvd
Cincinnati, OH 45251



STONE CREEK TOWNE CENTER

9825 Colerain Ave / 3645-3659 Stone Creek Blvd / 3720 Stone Creek Blvd
Cincinnati, OH 45251

Anchor



The information herein is not guaranteed. Although obtained from reliable sources, it is subject to errors, omissions and withdrawal from the market without notice.

STONE CREEK TOWNE CENTER

9825 Colerain Ave / 3645-3659 Stone Creek Blvd / 3720 Stone Creek Blvd
Cincinnati, OH 45251



#	Tenant	SF
1	AT&T	2,500
2	Define Eyebrows	500
3	FedEx Office	2,000
5	Men's Wearhouse	1,500
6	IVX	2,250
7	Sleep Number	2,800
8	Colerain Urgent Care	3,000
9	Great Clips	1,200
10	L'amour Nails Spa	1,200
11	Fusion Wok Sushi	1,020
12	Stone Creek Family Dentistry	2,800
13	Palm Beach Tan	3,500

#	Tenant	SF
15	AVAILABLE	3,000
16	LaRosa's Pizzeria	4,000
17	Salon Concepts	4,500
18	Mariner Finance	1,823
19	Weight Watchers	1,554
20	Rose & Remington	1,524
21	AVAILABLE	2,596
22	Five Guys/ AVAILABLE 9/20	2,857
23	La Pinata Mexican Grill	3,500
25	Bob Sumerel Tire & Service	
26	AVAILABLE	6,050
27	Lane Bryant	6,600

#	Tenant	SF
28	JCPenney	
29	Bed Bath & Beyond	25,000
30	Old Navy	15,000
31	Justice	4,000
34	AVAILABLE	1,200
35	Holiday Hair	1,200
36	Gruelle Orthodontics	2,400
38	Best Buy	30,000
44	Starbucks	1,750
45	AVAILABLE	6,617
46	TGI Fridays	
47	Olive Garden	

#	Tenant	SF
49	Quaker Steak & Lube	
50		
200	La-Z-Boy	
201	Meijer	
208	AVAILABLE	5,000
209	Buffalo Wild Wings	
210	Massage Envy	
211	Verizon Wireless	

The information herein is not guaranteed. Although obtained from reliable sources, it is subject to errors, omissions and withdrawal from the market without notice.